

RESCO

YOUR GREEN ENERGY PARTNER™

Partners in Project Green – Energy Leaders Consortium

Solar PV Overview

Incorporated in 2006, RESCo has become a full-service solar & energy storage technology expert throughout Ontario and across Canada.

- Relationship driven, business based on referrals and repeat customers
- Only top tier manufacturers used
- Part of the Flynn Family





Flynn is North America's leading building envelope trade contractor. For 40 years Flynn has been providing quality contracting services in the institutional, commercial, and industrial construction marketplace.

Flynn employs in excess of 6,000 people in 35 locations and is positioned in five distinct, but related, business sectors:

Design, Manufacture, Install, Service & Maintain the following:

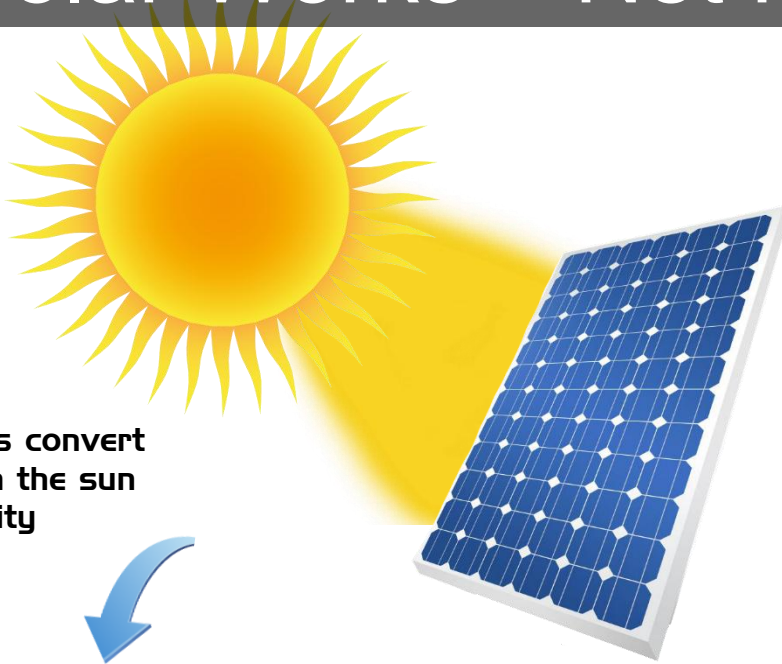
- Roofing & Waterproofing
- Glazing & Curtain Wall
- Architectural Metals
- Modular wall systems
- Environmental Solutions



How Solar Works & Where it Makes Sense

How Solar Works – Net Metering

1 Solar panels convert energy from the sun into electricity



2 An inverter converts the electricity produced by the solar panels from direct current (DC) to alternating current (AC) for use in the building

3 The clean energy generated is used directly by the building

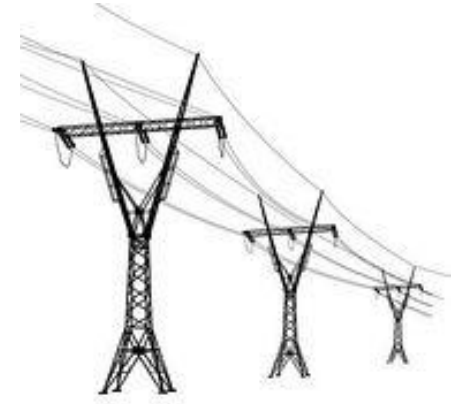


Energy used in your facility from the electrical grid



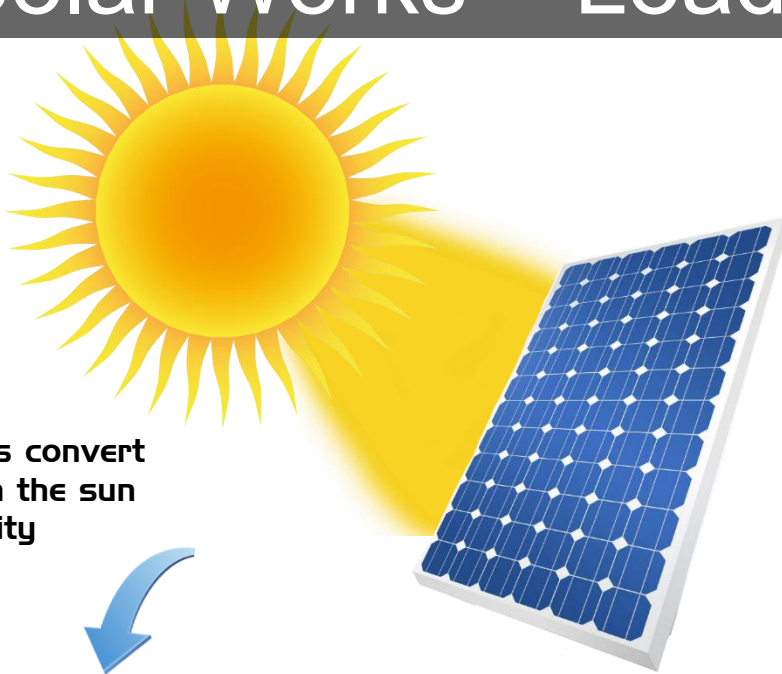
Excess energy from your solar array not used in your facility goes back to the electrical grid

4 A bi-directional meter measures energy used and excess energy produced



How Solar Works – Load Displacement

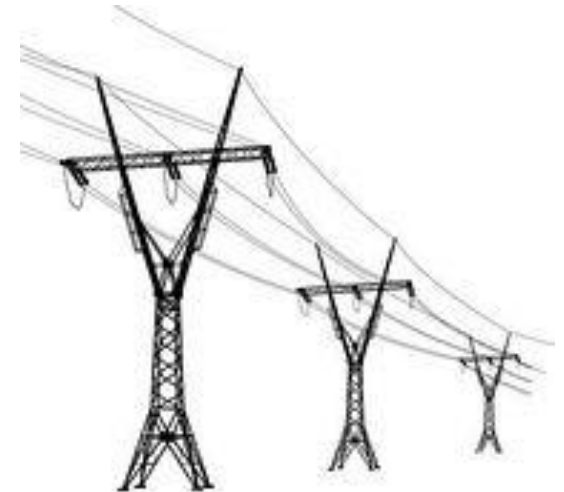
- 1** Solar panels convert energy from the sun into electricity



- 2** An inverter converts the electricity produced by the solar panels from direct current (DC) to alternating current (AC) for use in the building



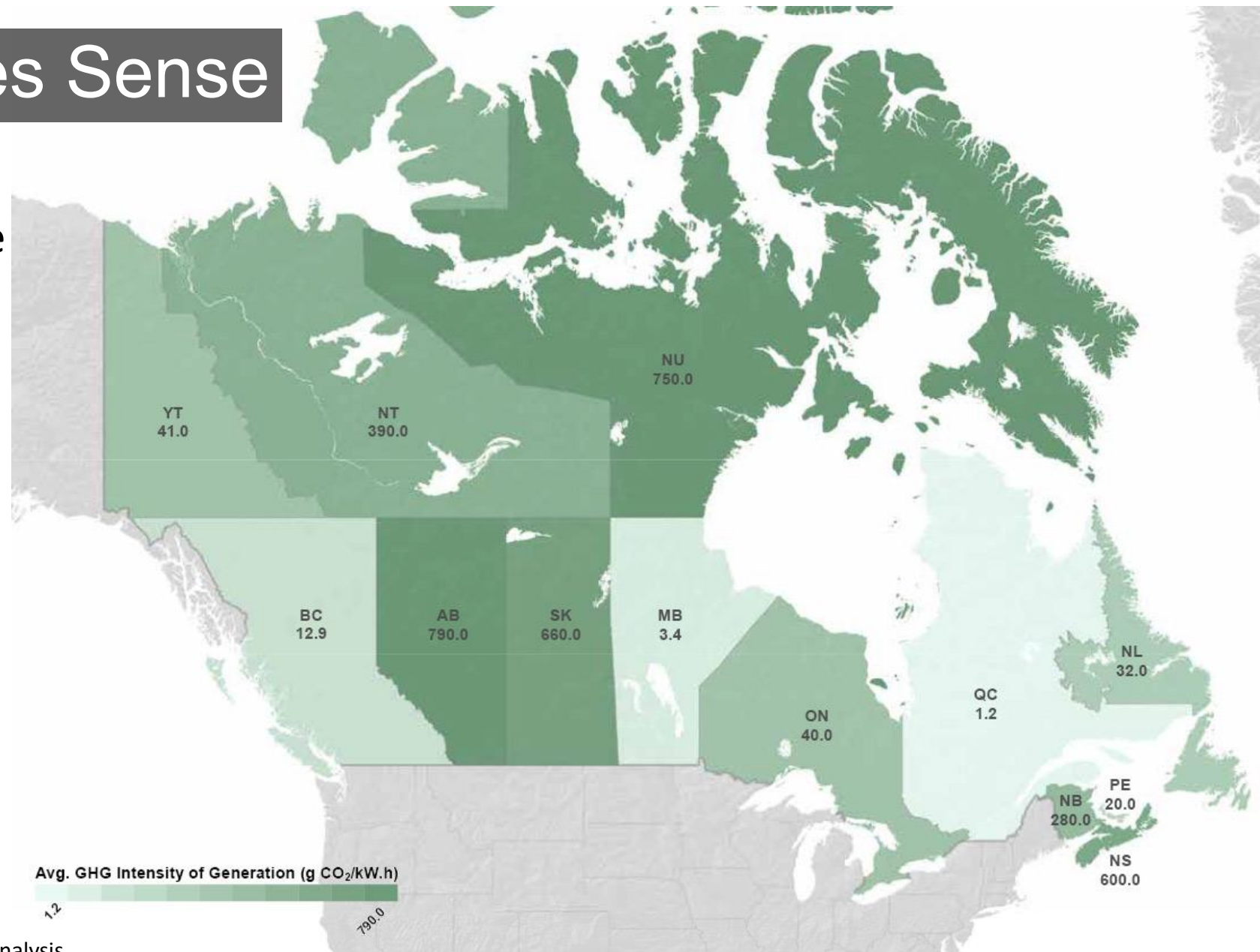
- 3** The clean energy generated is used directly by the building



- 4** Additional control provisions prevent any export onto the grid

Where Solar Makes Sense

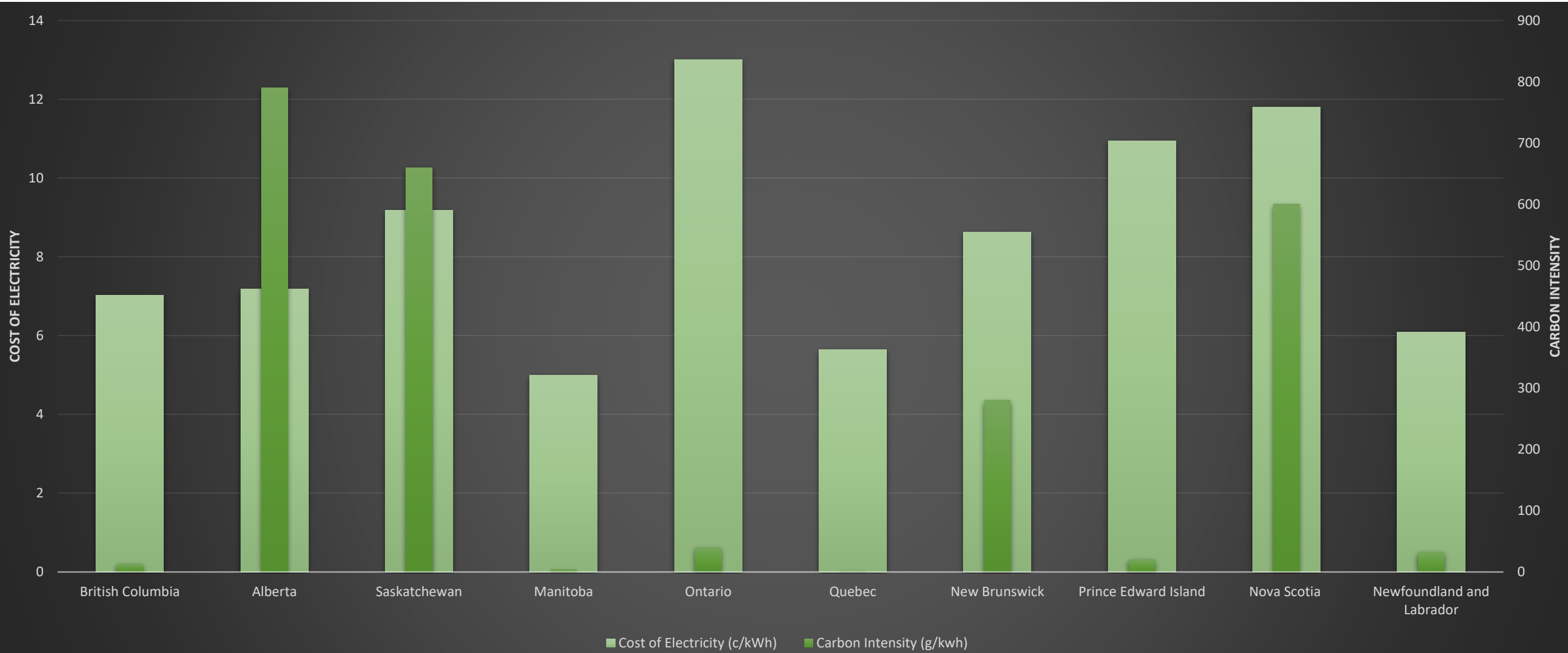
- Map shows the greenhouse gas intensity of electricity generation in Canadian provinces and territories
- Jurisdictions with high carbon intensity allow for greater carbon offsets with solar



Source: Canada's Renewable Power Landscape – Energy Market Analysis

Map produced by the NEB, December 2017. The map is a graphical representation intended for general informational purposes only.

Carbon Intensity vs. Electricity Costs



Typical Systems & Rooftop Applications

Rooftop Installations

- **Ballasted:** Sits on top of the roof deck and does not require any roof penetration
- **Flush Mount:** Array panels are physically connected and parallel to the rooftop
- **Elevated:** Infrequently used but possible if structurally feasible

Ballasted



Flush Mount



Elevated



Other Installation Types

- **Ground Mount:** Array can be oriented as desired to optimize production
- **Custom:** Array is designed to suit specific customer needs
- **Carport:** Added benefit of protection from the elements for cars and drivers

Ground Mount



Custom



Carports



Major Equipment & Warranties



MODULES

Warranty: 30-Year Performance,
10-Year Product



INVERTERS

Warranty: 10-Year Product



RACKING

Warranty: 10-Year Product

Ballasted

Total weight distributed amongst the array

- No point load
- No rooftop penetrations
- Ideal for flat, unobstructed roofs
- Includes roof isolation
- Additional spacing needed between rows
- Wind-tunnel tested
- Need excess reserve capacity



Sample Ballasted

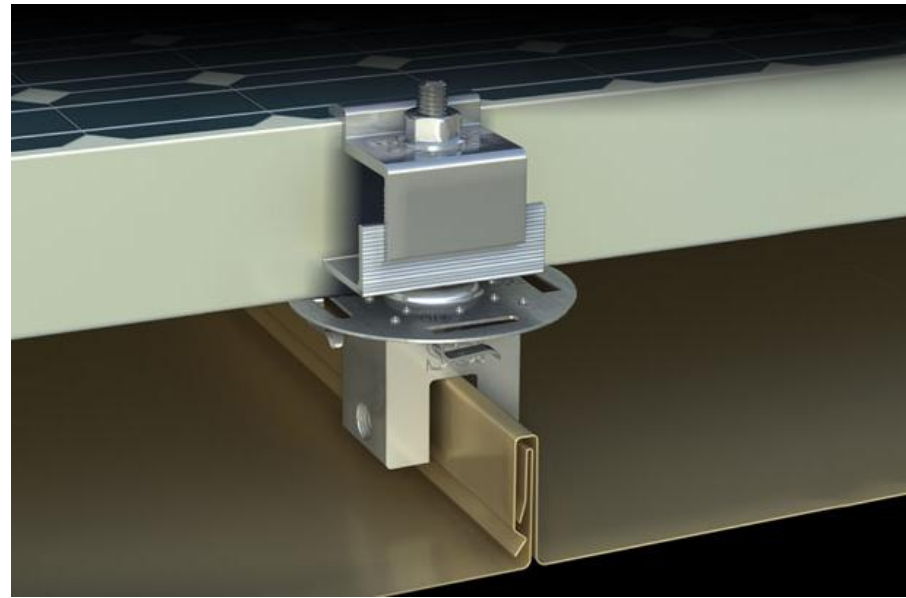
Flynn Manufacturing, Foot-Based



Flushmount

Physically connected to the roof deck

- Ideal for metal deck
- Ideal for angled roofs
- May require roof penetration
- Need excess reserve capacity



**Sample Sanding-Seam
roof S5! Clamp**



**Corrugated &
trapezoidal roof
straddle block**



Sample Flushmount

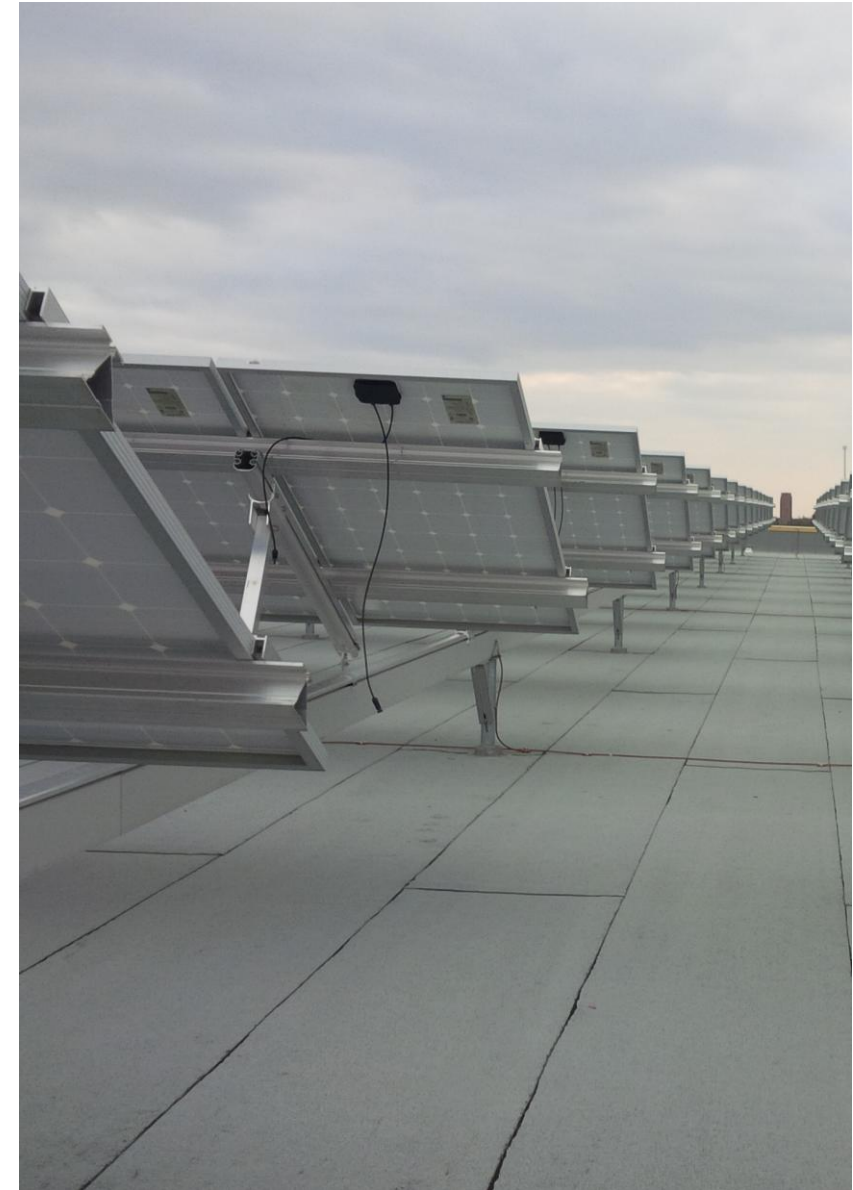
Home Hardware, Standing-Seam S-5! Mini



Elevated

Weight is centered on building columns and beams

- Often requires roof penetration; mechanically fastened
- Ideal for flat roofs with limited structural capacity
- Ideal for roofs with shading implications
- Need excess reserve capacity



Sample Elevated

Toronto Pan Am Centre, attached building structure



What Good Projects Look Like

A Good Solar Design

- ✓ Does not interfere with roof venting, HVAC units, pipelines, conduit, plumbing stacks, etc.
- ✓ Does not interfere with roof drains or skylights
- ✓ Incorporates snow loads and drifting considerations (P.Eng stamped)
- ✓ Incorporates wind loads and wind uplift considerations (P.Eng stamped)
- ✓ Incorporates sign-off from roof membrane manufacturer (may include additional roof isolation)
- ✓ Allows for appropriate clearances for access to roof top equipment, including PV equipment



What to Look For

- ✓ More than 20,000sqft rooftop
- ✓ No large trees or tall buildings to the south
- ✓ Flat, unobstructed rooftop
- ✓ Roof in good condition
- ✓ Good base electricity load
- ✓ Owned building, or engaged long-term tenant



Rebates & Incentives

Federal Solar Incentives



Capital Cost Allowance (CCA):

- Has been available for many years
- Allows for the accelerated depreciation of solar in the first year (set at rate of 75% currently, set to drop to 50% in 2026)
- Savings based on corporate tax rate (26%)

Investment Tax Credit (ITC):

- Released March 28, 2023
- Allows for 30% savings in first year
- Considered a taxable benefit

Ontario Solar Rebate

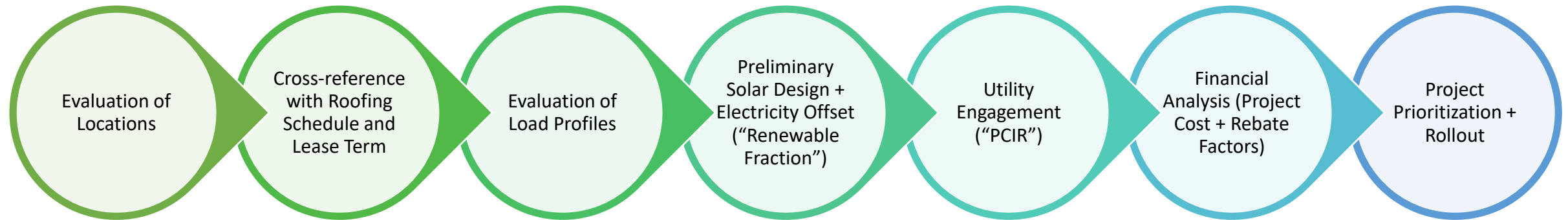


SaveON Energy:

- Release January 8, 2025
- Based on program previously available through Hydro Ottawa
- No grid export permitted (referred to as “Load Displacement”)
- Provides up to 50% of the CAPEX
 - To a max of \$860,000
 - 30% ITC eligible on the balance

Getting the Right Project

Where to Start



Thank You!



Lena Hellyer

Director, Business Development

Lena.Hellyer@rescoenergy.com